

The image features a modern dining area with a table covered in a brown and gold tropical leaf patterned tablecloth. A grey upholstered chair with black legs is on the left. The table is set with two glasses and folded napkins. A vase with dried branches is on the right. In the background, a balcony railing and a view of modern houses are visible. A black rectangular box in the top center contains the brand name.

H
HERTEX
est. 1987

EDEN

Couture

EDEN

The Garden of Eden could not have offered a more beautiful variety of botanical splendour than the florals in this collection. Printed on various base cloths, including cotton-linen and viscose-linen, each design is 280cm to 300cm wide, with patterns that range from shabby chic to tropical leaf delight.





Couture





TEMPTATION



TEMPTATION in *Moon Mist*



TEMPTATION in *Golden Touch*

280cm. 90% cotton; 10% linen. 30 000 rubs. Down-the-roll pattern.
Pre-shrunk and double-washed. Dye-lot variations may occur.



Couture



TEMPTATION *in Moon Mist*

BLISSFUL



BLISSFUL in *Autumn Hues*

PARADISE



PARADISE in *Summer Blush*

295cm. 70% viscose; 30% linen. 20 000 rubs. Down-the-roll pattern.
Pattern does not repeat horizontally. Pre-shrunk and double-washed.
Dye-lot variations may occur.





BLISSFUL in Autumn Hues



PARADISE in Summer Blush

BELLE FLEUR



BELLE FLEUR in *Topaz*

275cm. 100% cotton. 25 000 rubs.

Down-the-roll pattern. Pattern does not repeat horizontally.

Pre-shrunk and double-washed. Dye-lot variations may occur.





Couture

CREATION



CREATION *in Overjoy*

275cm. 100% cotton. 25 000 rubs.
Multi-directional. Pre-shrunk and double-washed.
Dye-lot variations may occur.





EQUATORIAL



EQUATORIAL in Autumn Hues



EQUATORIAL in Topaz

277cm. 100% cotton. 25 000 rubs. Down-the-roll pattern.
Pre-shrunk and double-washed. Dye-lot variations may occur.





Couture



A close-up photograph of a grey fabric with a fine, woven texture. The fabric is covered in an abstract pattern of irregular, organic shapes in shades of orange, yellow, and brown. The pattern appears to be printed or dyed onto the fabric. A diagonal crease or fold is visible across the middle of the image, creating a sense of depth and movement. The lighting is soft and even, highlighting the texture of the fabric and the vibrant colors of the pattern.

H | HERTEX
est. 1985

EQUATORIAL *in Topaz*

AMELIE



AMELIE in Autumn



AMELIE in Greenery



H | HERTEX
est. 1981

AMELIE in Autumn

Couture



AMELIE in Autumn

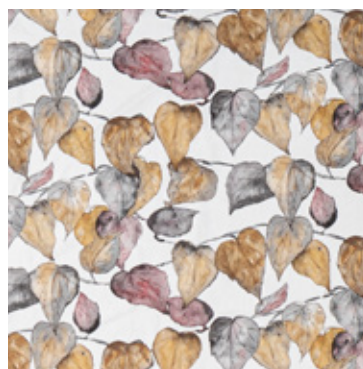
FOLIA ETCH



FOLIA ETCH *in Winter*



FOLIA ETCH *in Greenery*



FOLIA ETCH *in Autumn*

278cm. 100% cotton. 20 000 rubs. Down-the-roll pattern.
Dye-lot variations may occur.





Couture



FOLIA ETCH in Greenery



MILANO



MILANO in *Crystal*



MILANO in *Sand Dew*



MILANO in *Diamond*



MILANO in *Granite*



MILANO in *Peridot*



MILANO in *Tide*



MILANO in *Cypress*



MILANO in *Onyx*



MILANO in *Naval*

290cm. 65% polyester; 25% viscose; 10% linen. Exceeds 30 000 rubs. Down the roll.
Suitable for slipcovers. Pre-wash recommended. Dye-lot variations may occur.



MILANO *in Citron*



MILANO *in Topaz*



MILANO *in Rose Quartz*

